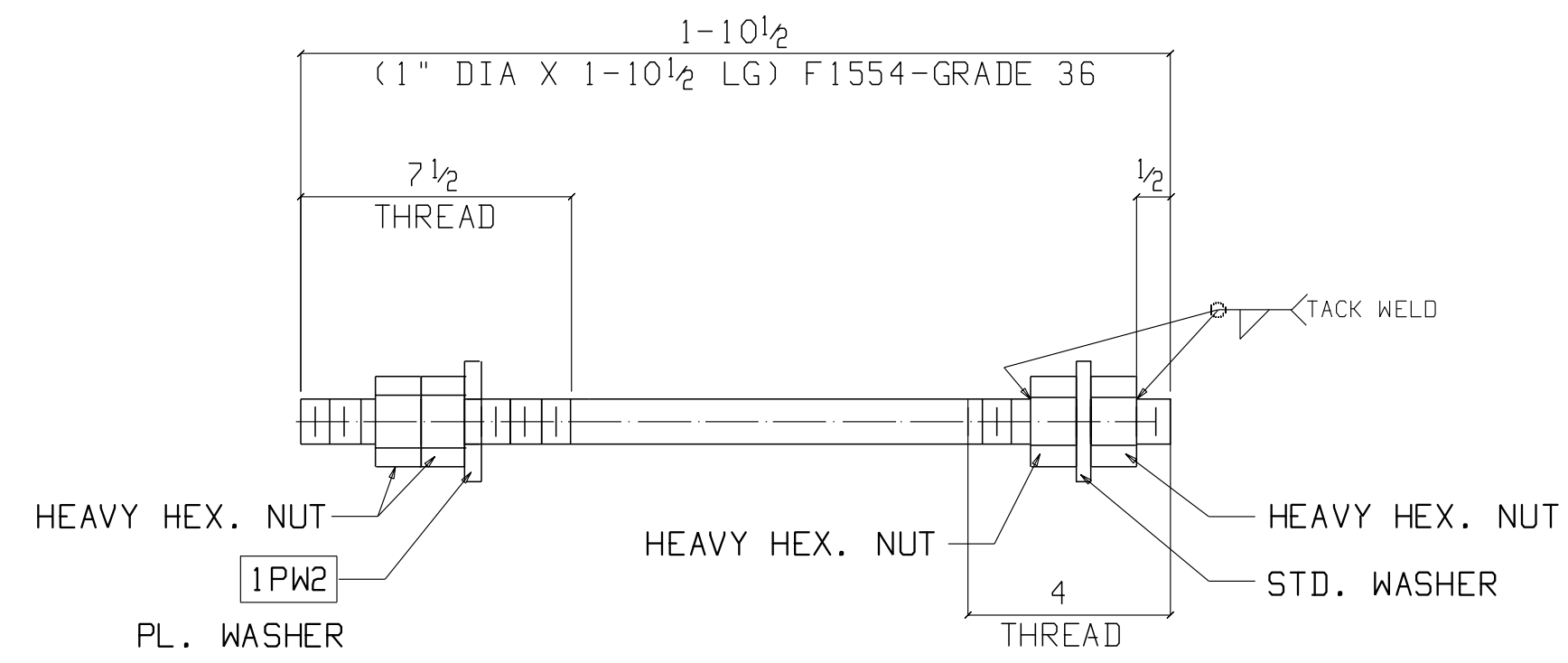
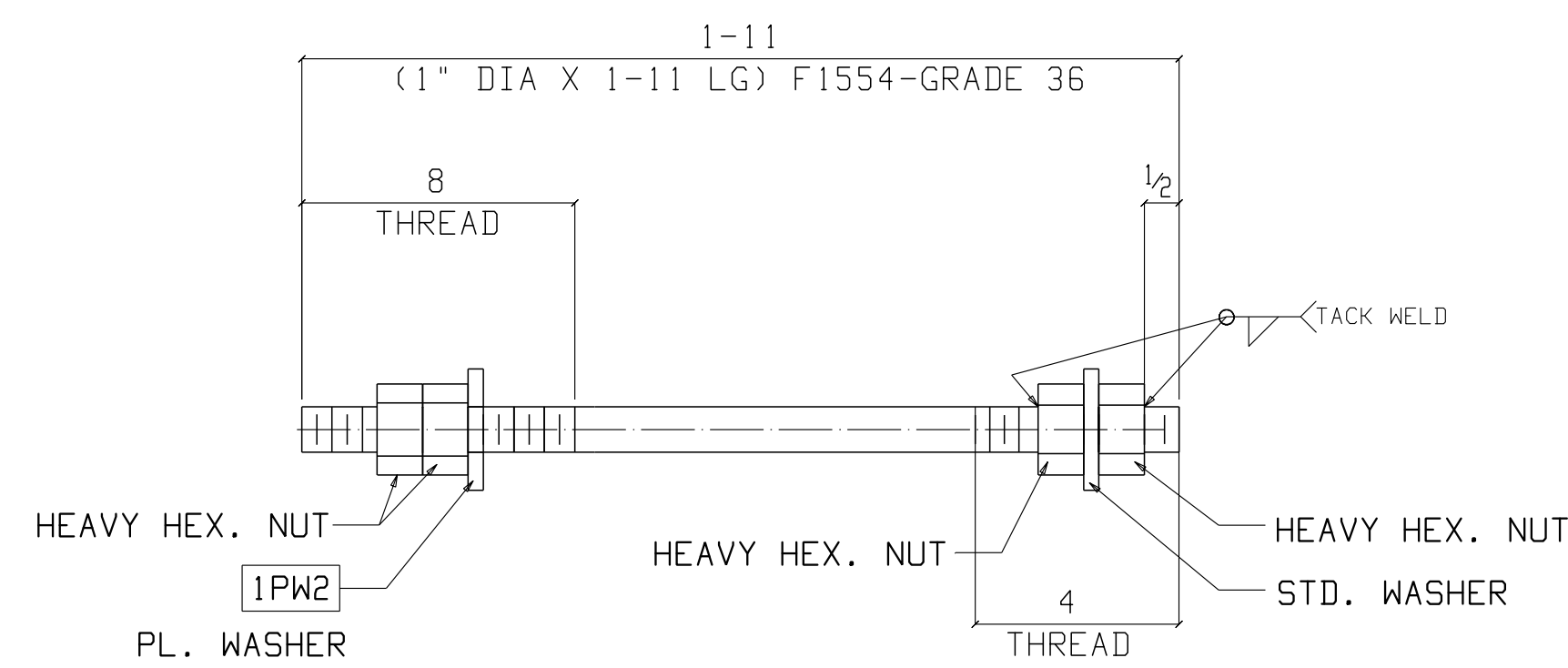


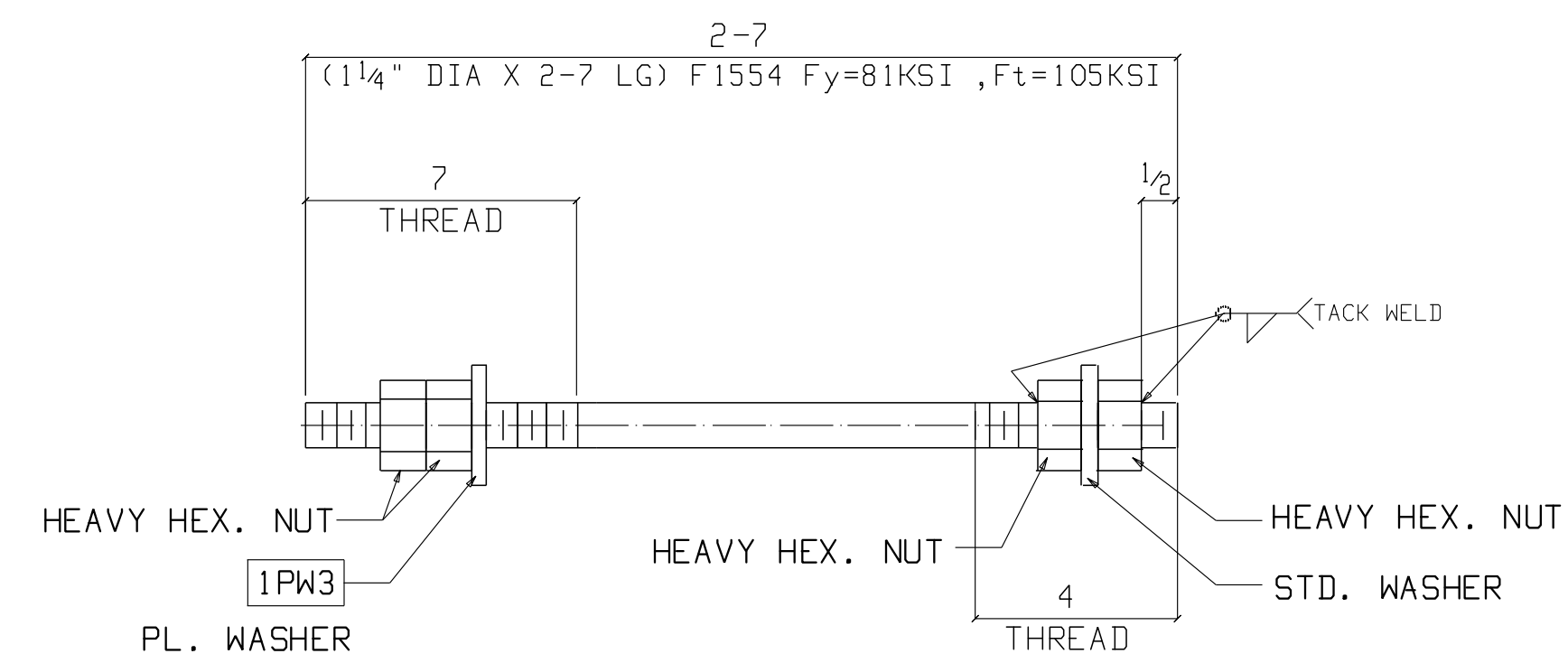
136 ANCHOR BOLTS 1AB1 (NO PAINT)



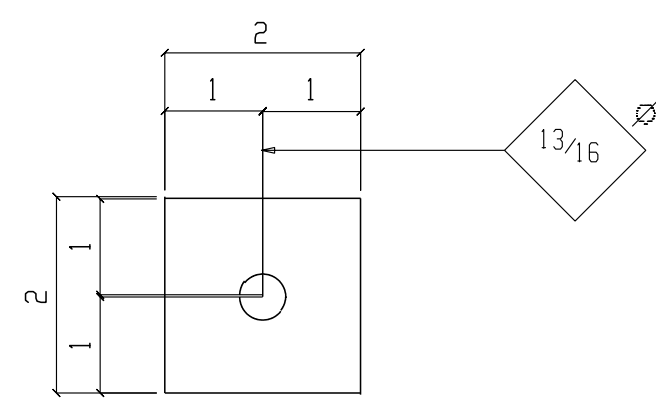
72 ANCHOR BOLTS 1AB2 (NO PAINT)



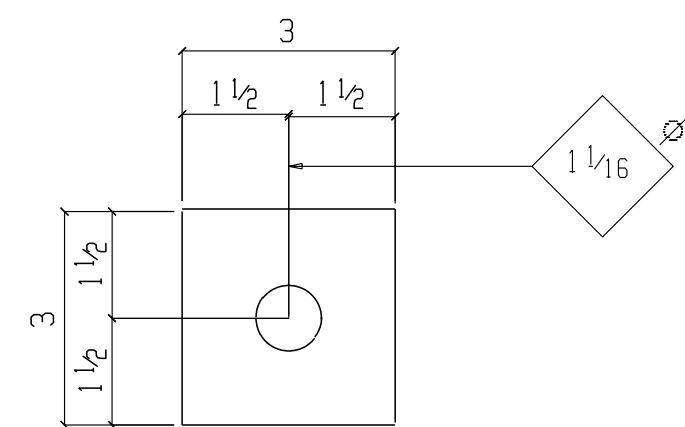
20 ANCHOR BOLTS 1AB3 (NO PAINT)



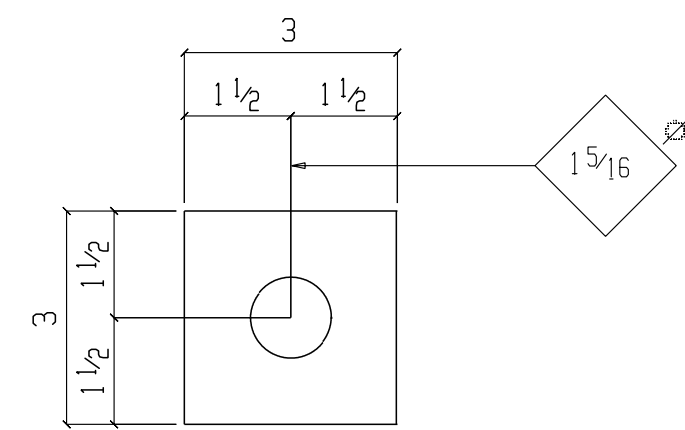
12 ANCHOR BOLTS 1AB4 (NO PAINT)



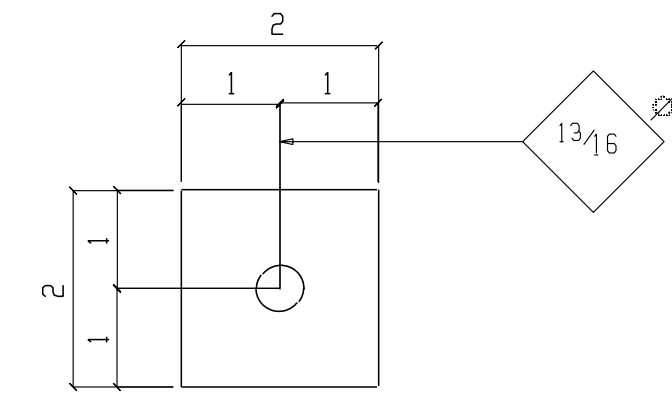
DETAIL OF 1PW1
(136 QUANTITY)



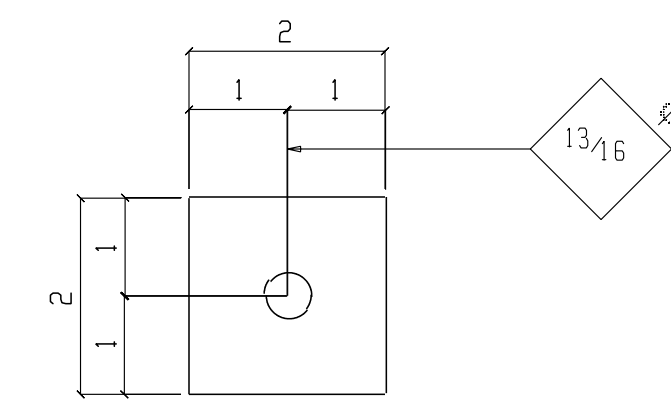
DETAIL OF 1PW2
(92 QUANTITY)



DETAIL OF 1PW3
(40 QUANTITY)



DETAIL OF 1PW4
(40 QUANTITY)
GALVANIZED



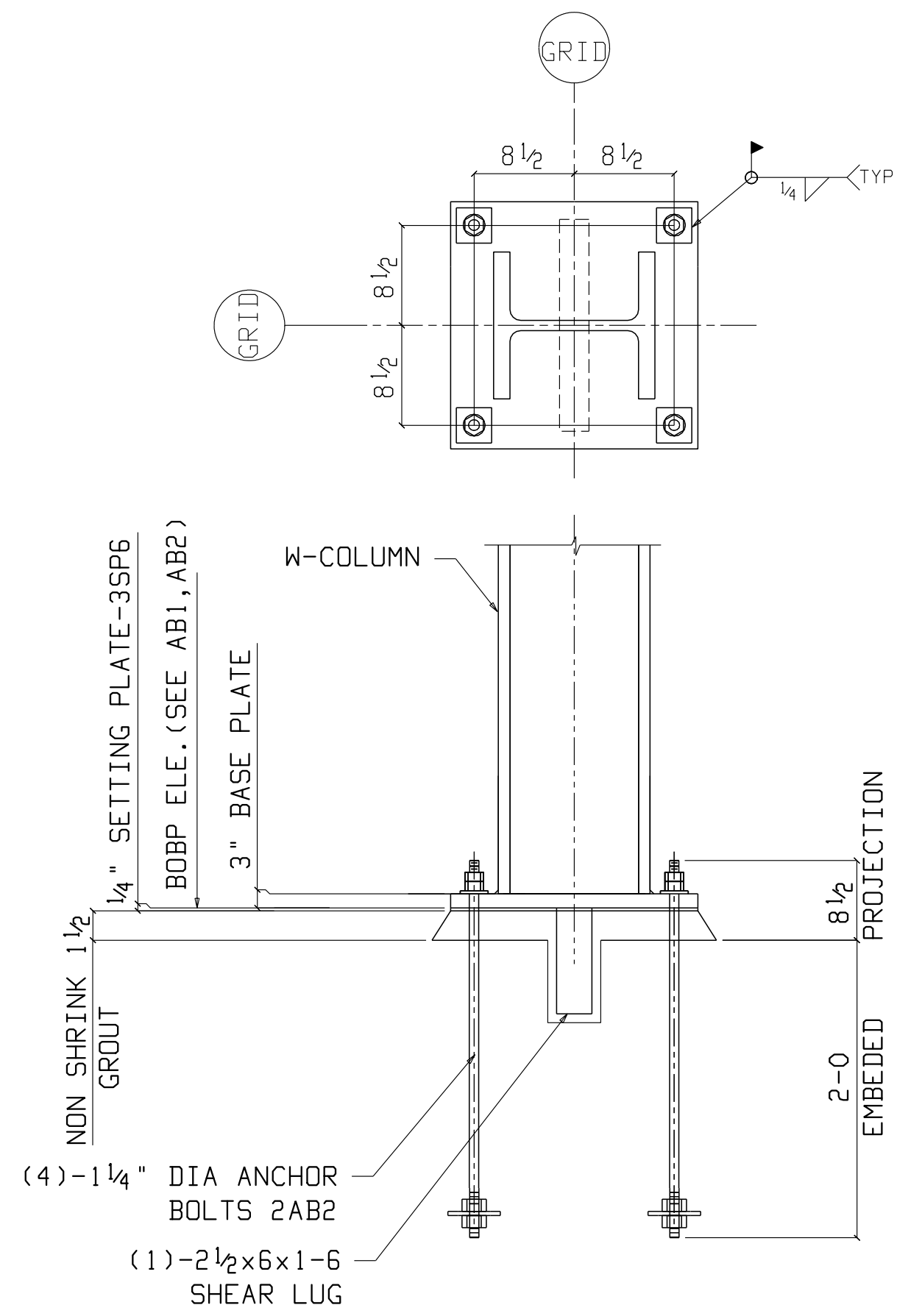
DETAIL OF 1PW5
(28 QUANTITY)

BILL OF MATERIAL

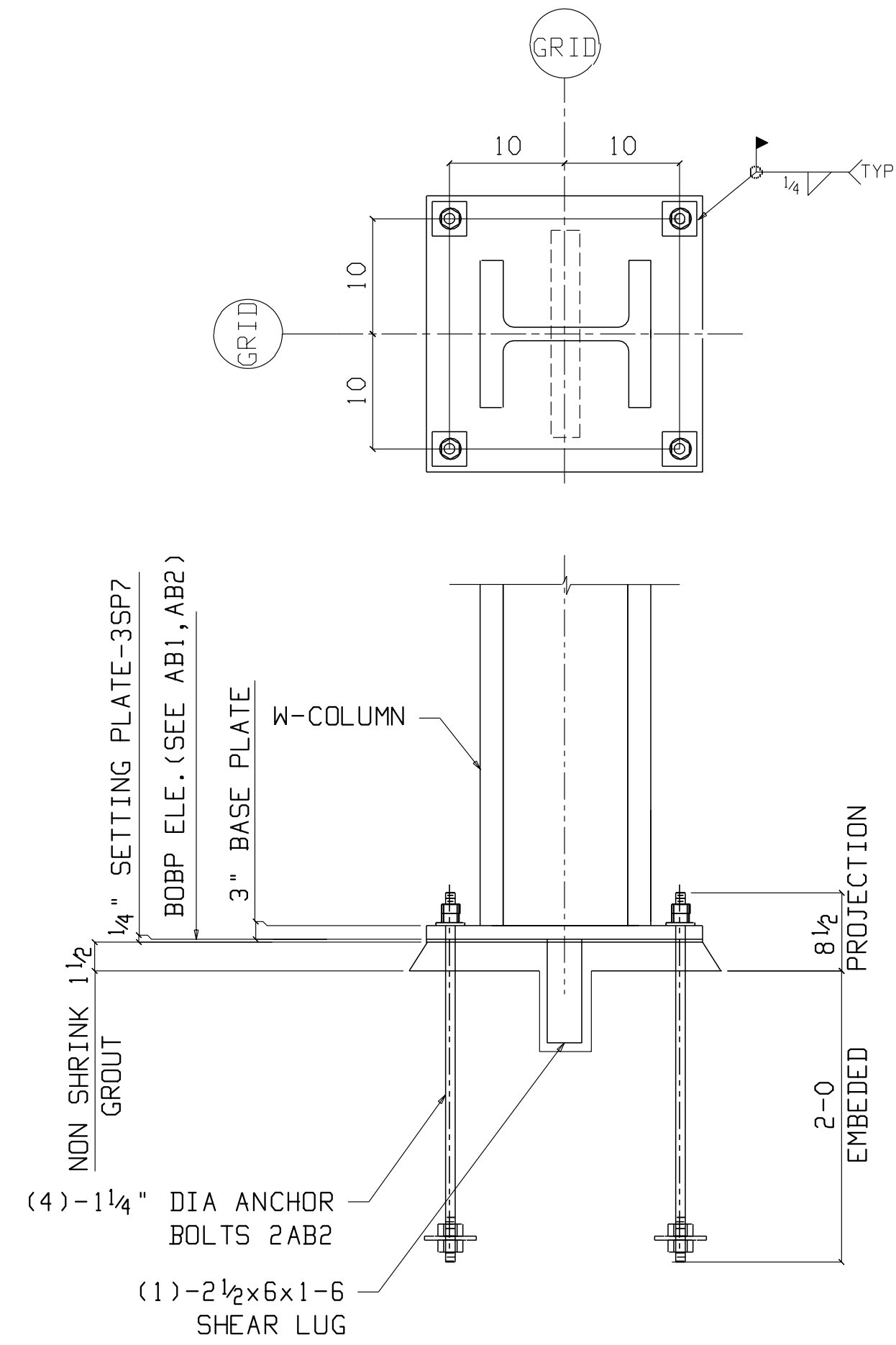
Unit Qty	Total Qty	POK	Sub	Description	Ft	In	Remarks	Grade	Unit Weight	Total Weight	Seq #	Seq Qty
		136	1AB1	ANCHOR BOLT							39	1
1	136	1AB1		3/4" DIA ROD	1	9		F1554GR36				
4	544			3/4" DIA HEAVY HEX. NUT								
1	136			3/4" DIA STD. WASHER								
1	136	1PW1		PL. 4x2	0	2		A36		39		
		72	1AB2	ANCHOR BOLT							69	1
1	72	1AB2		1" DIA ROD	1	10 1/2		F1554GR36				
4	288			1" DIA HEAVY HEX. NUT								
1	72			1" DIA STD. WASHER								
1	72	1PW2		PL. 4x3	0	3		A36	1	69		
		20	1AB3	ANCHOR BOLT							19	1
1	20	1AB3		1" DIA ROD	1	11		F1554GR36				
4	80			1" DIA HEAVY HEX. NUT								
1	20			1" DIA STD. WASHER								
1	20	1PW2		PL. 4x3	0	3		A36	1	19		
		12	1AB4	ANCHOR BOLT							15	1
1	12	1AB4		1 1/4" DIA ROD	2	7	Fy=81ksi Ft=105ksi	F1554				
4	48			1 1/4" DIA HEAVY HEX. NUT								
1	12			1 1/4" DIA STD. WASHER								
1	12	1PW3		PL. 4x3	0	3		A36	1	15		



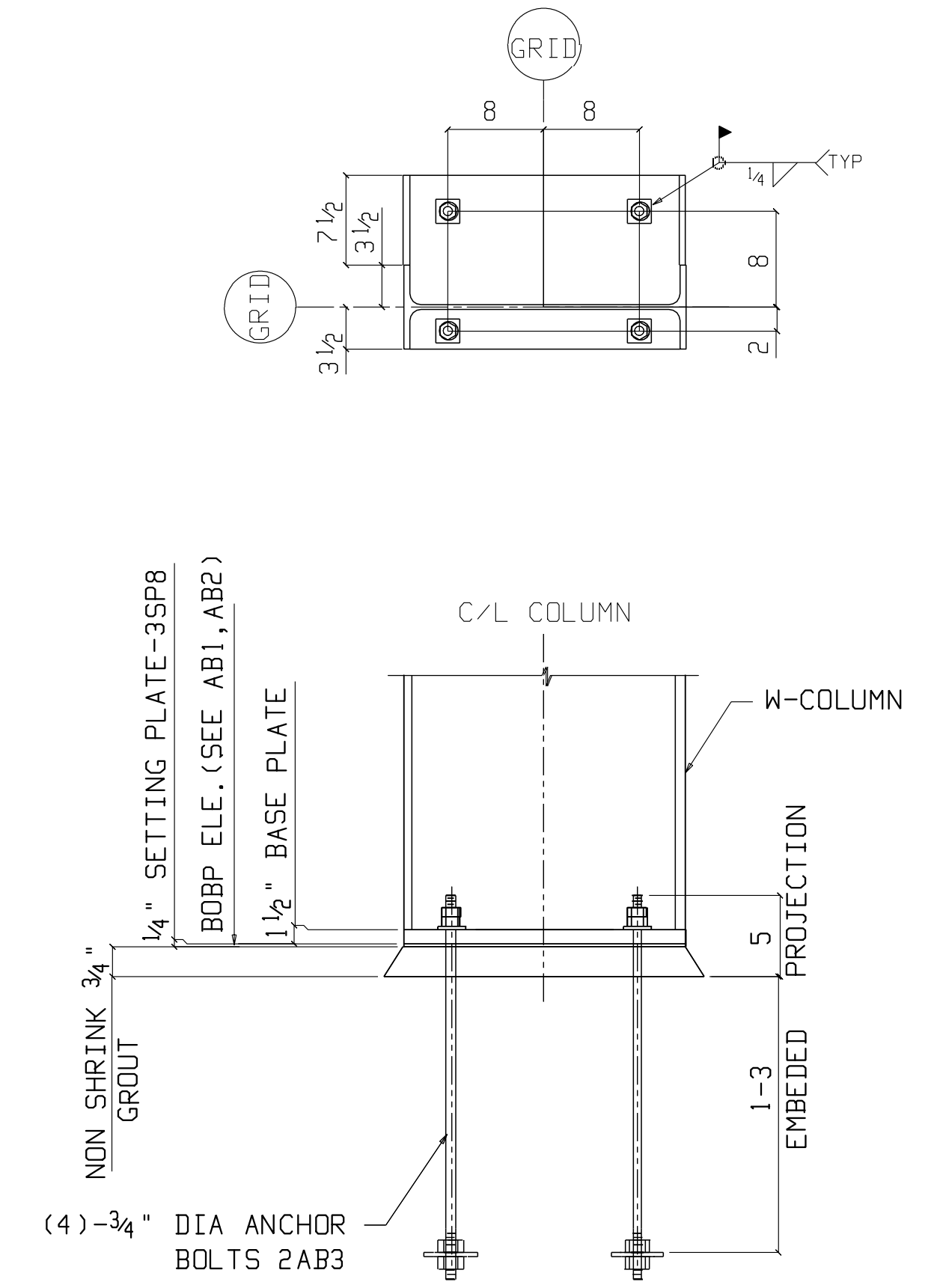
Edited by Foxit PDF Editor
 For Evaluation Only
 Foxit Software Company, 2004



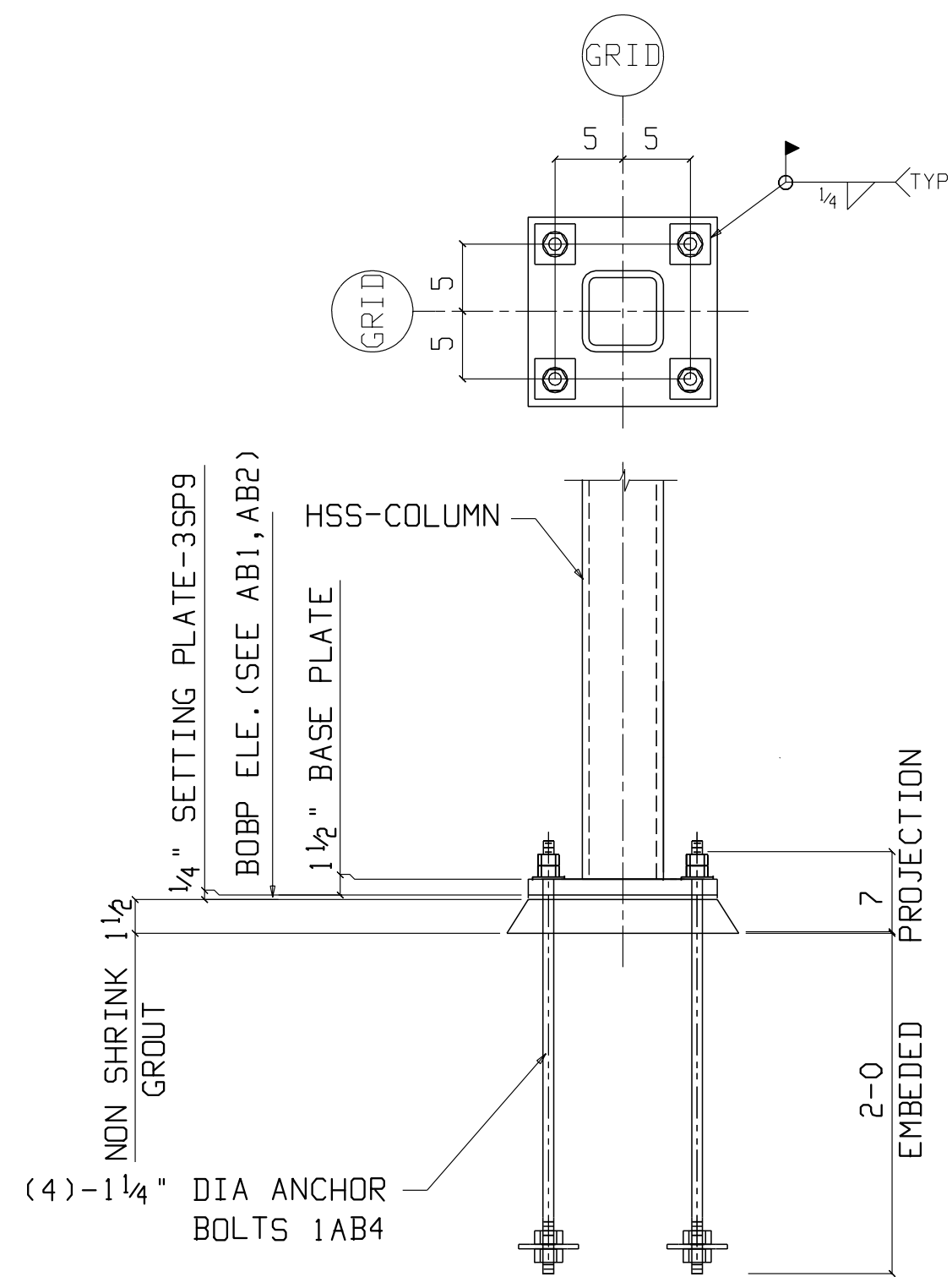
ANCHOR BOLT DETAIL - TYPE 6
(3 LOCATIONS)



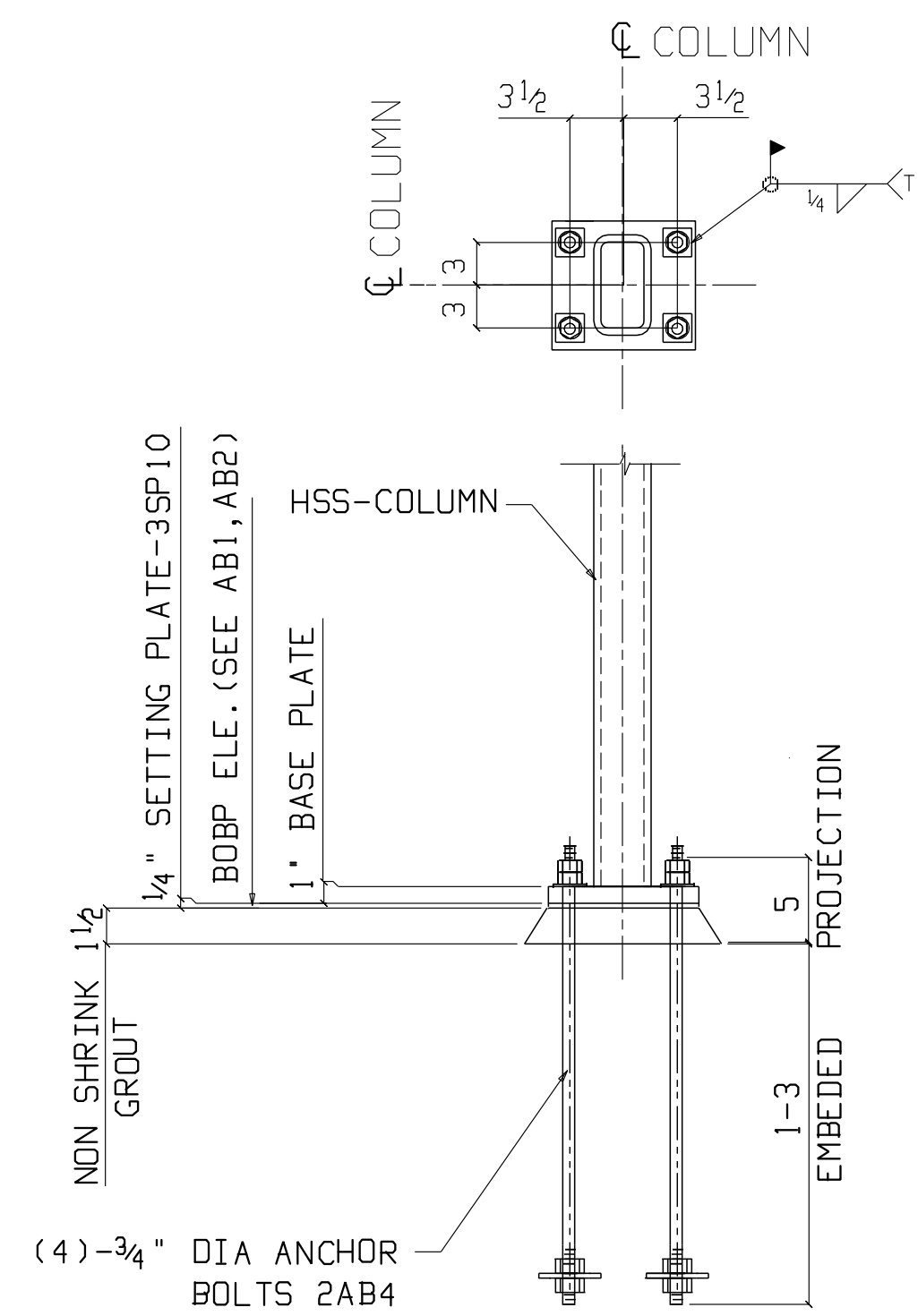
ANCHOR BOLT DETAIL - TYPE 7
(2 LOCATIONS)



ANCHOR BOLT DETAIL - TYPE 8
(10 LOCATIONS)

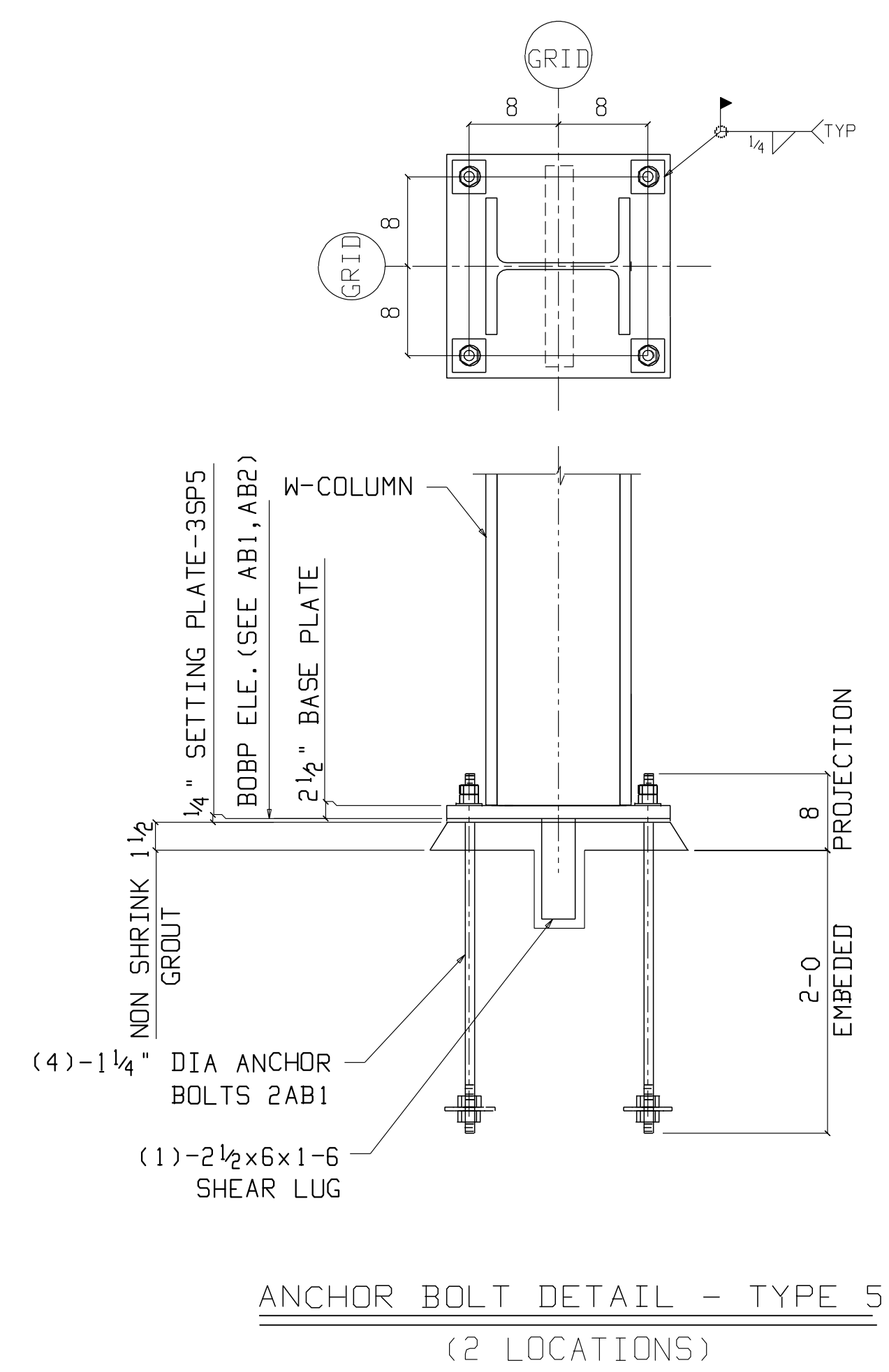
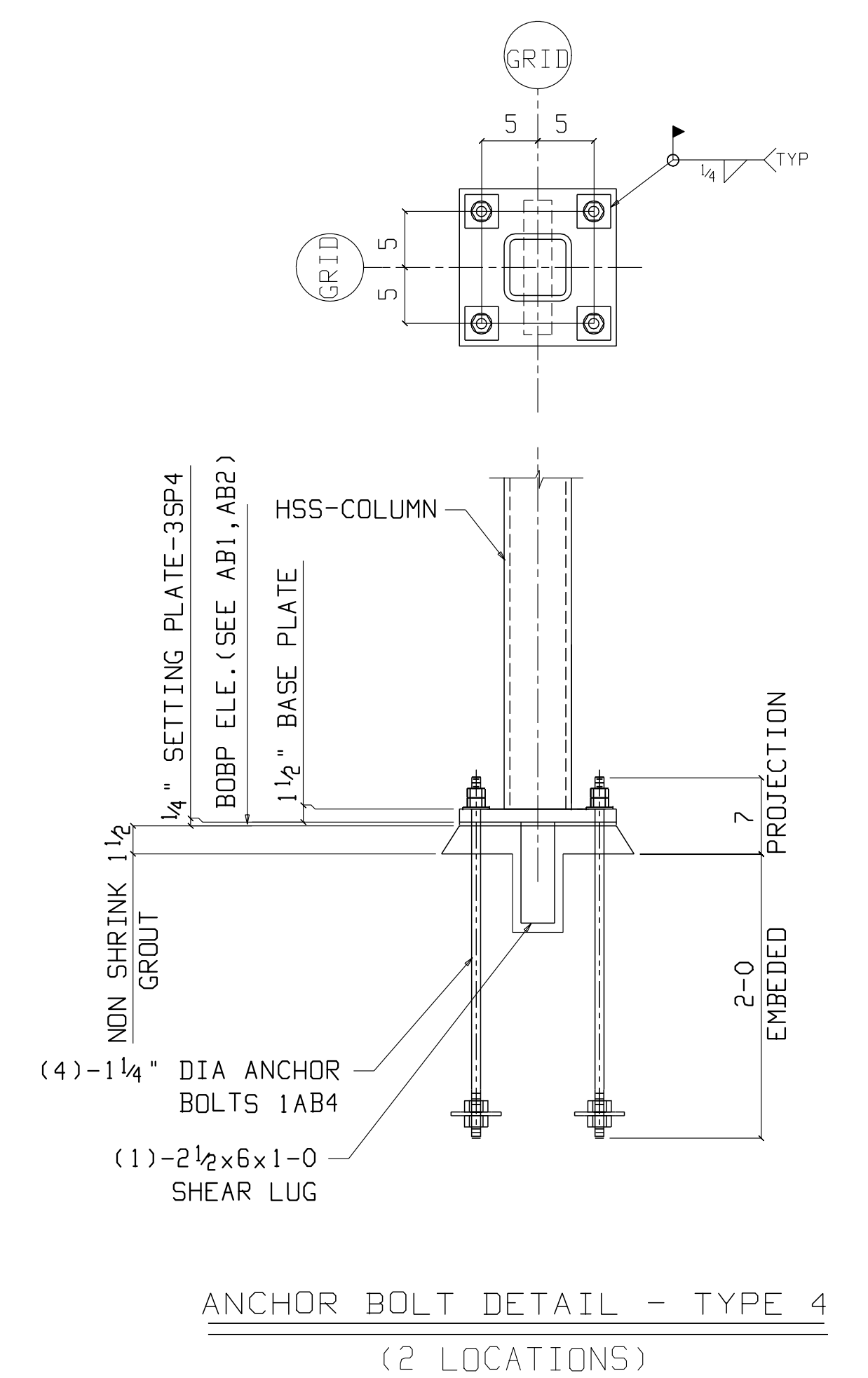
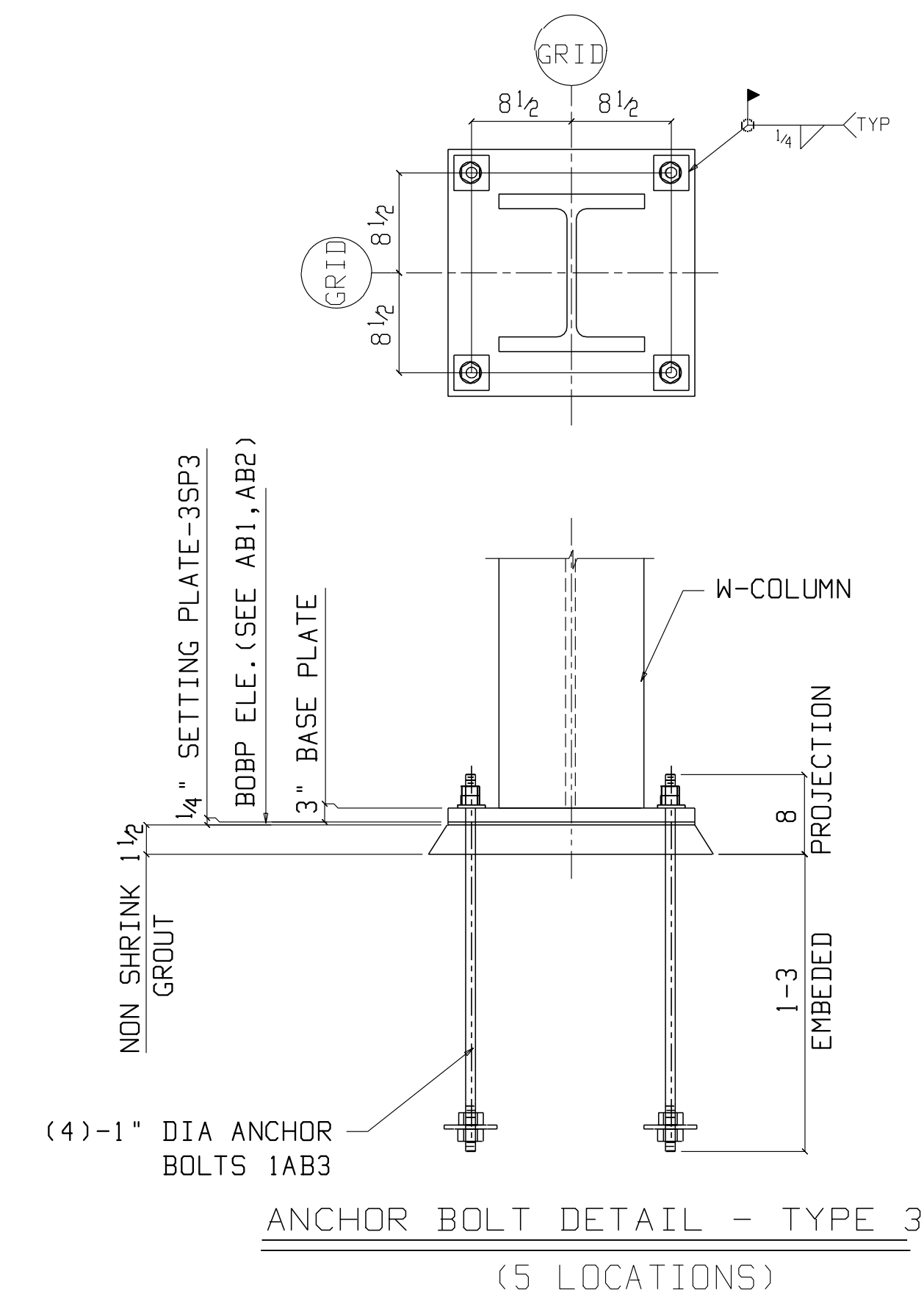
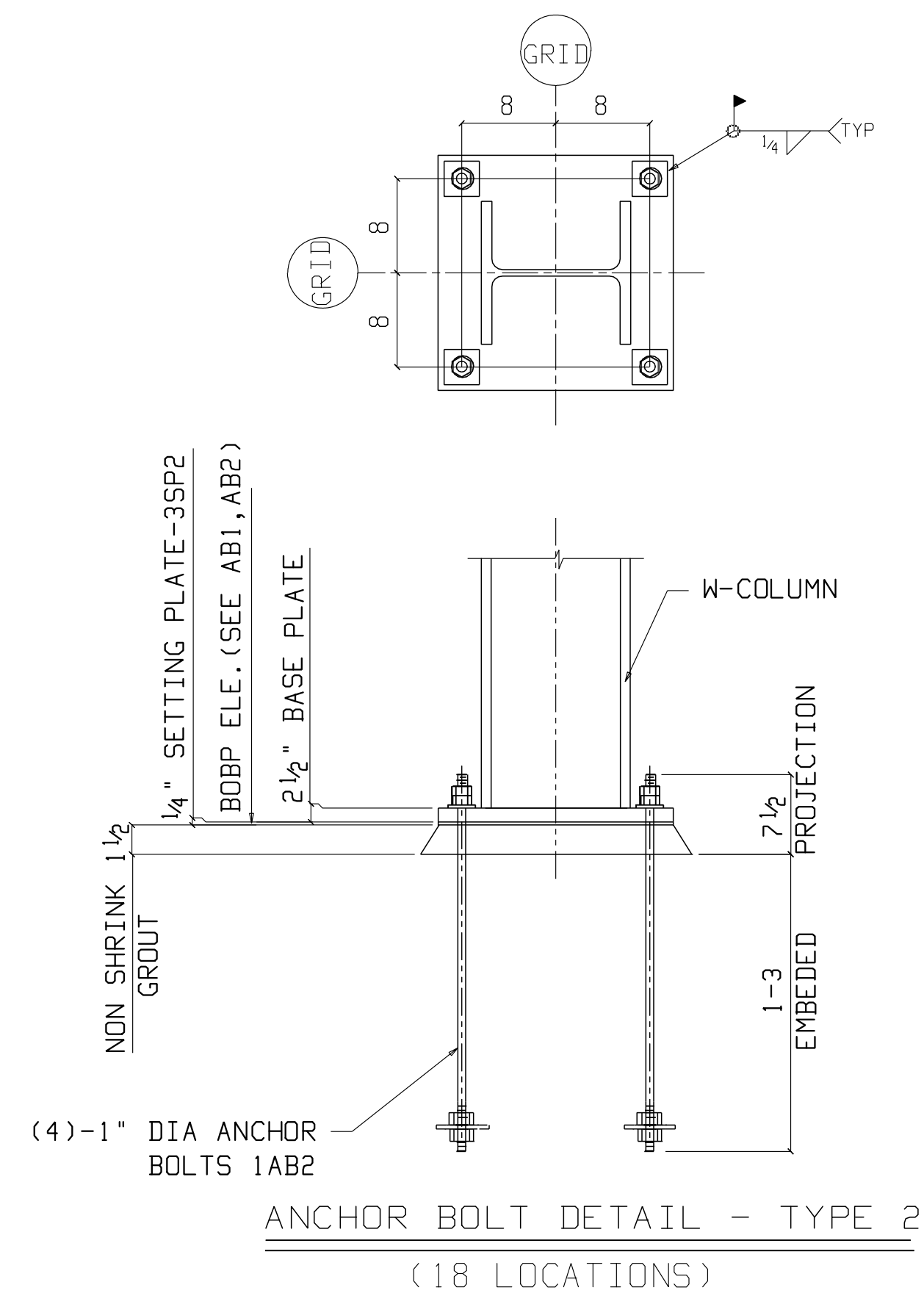
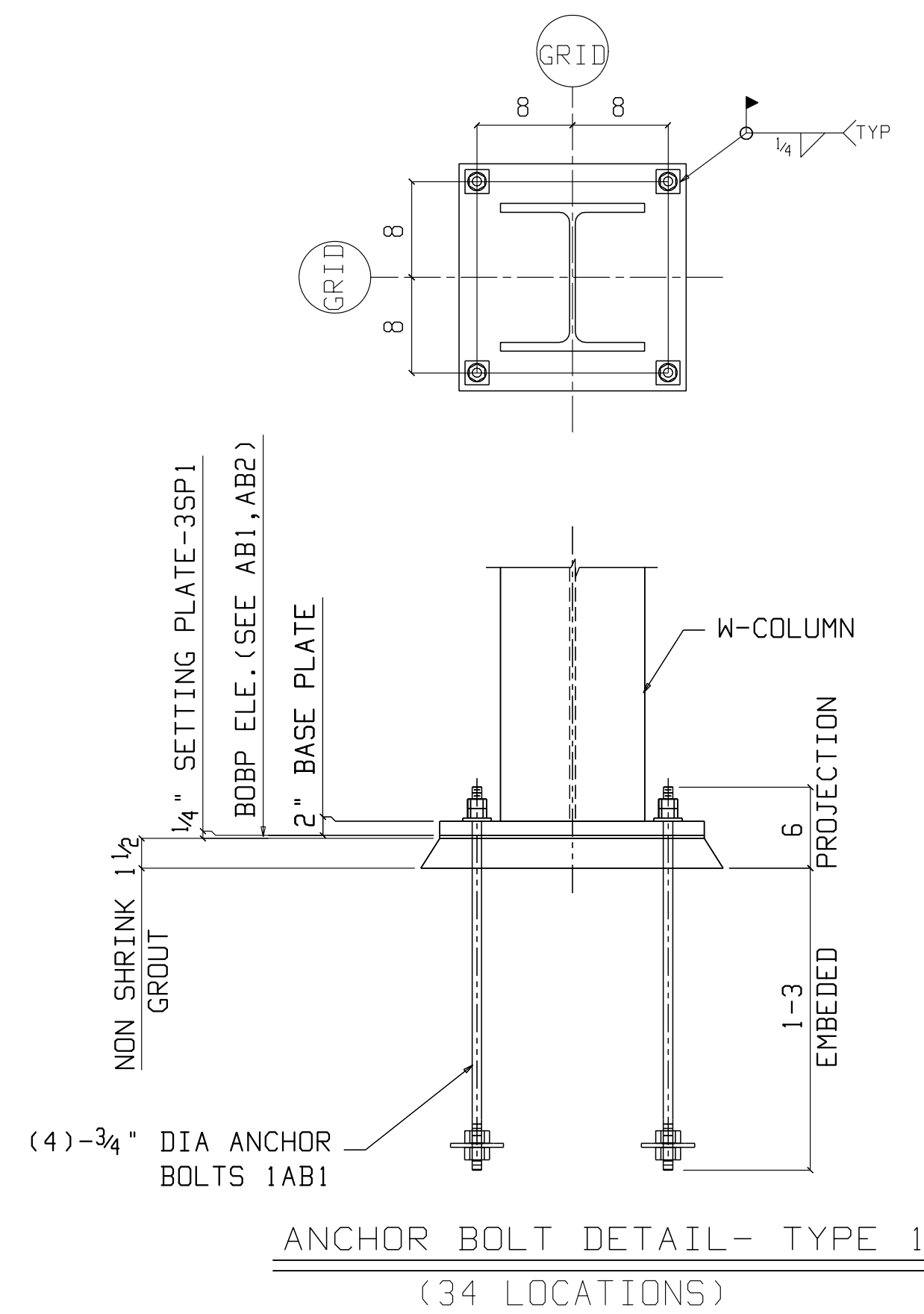


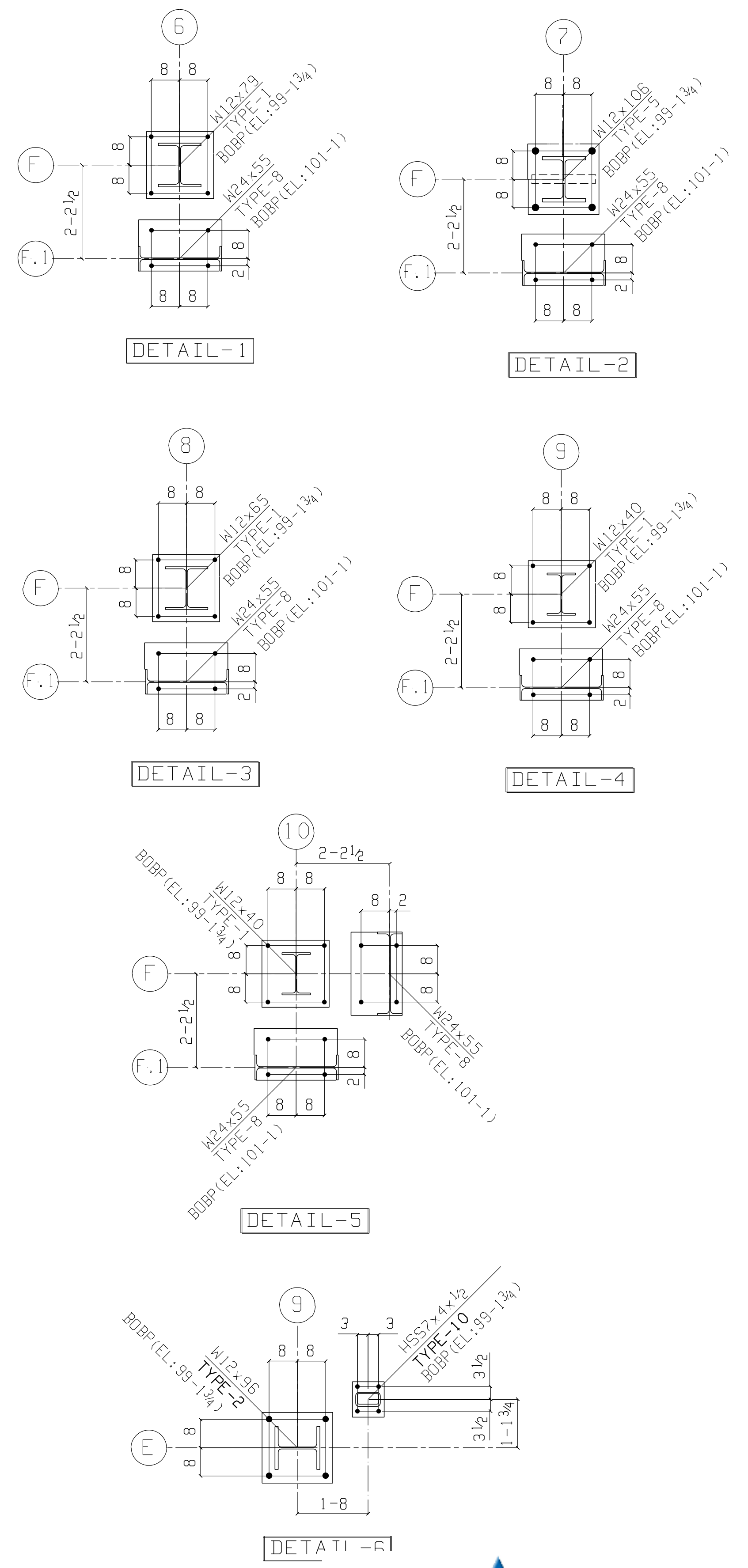
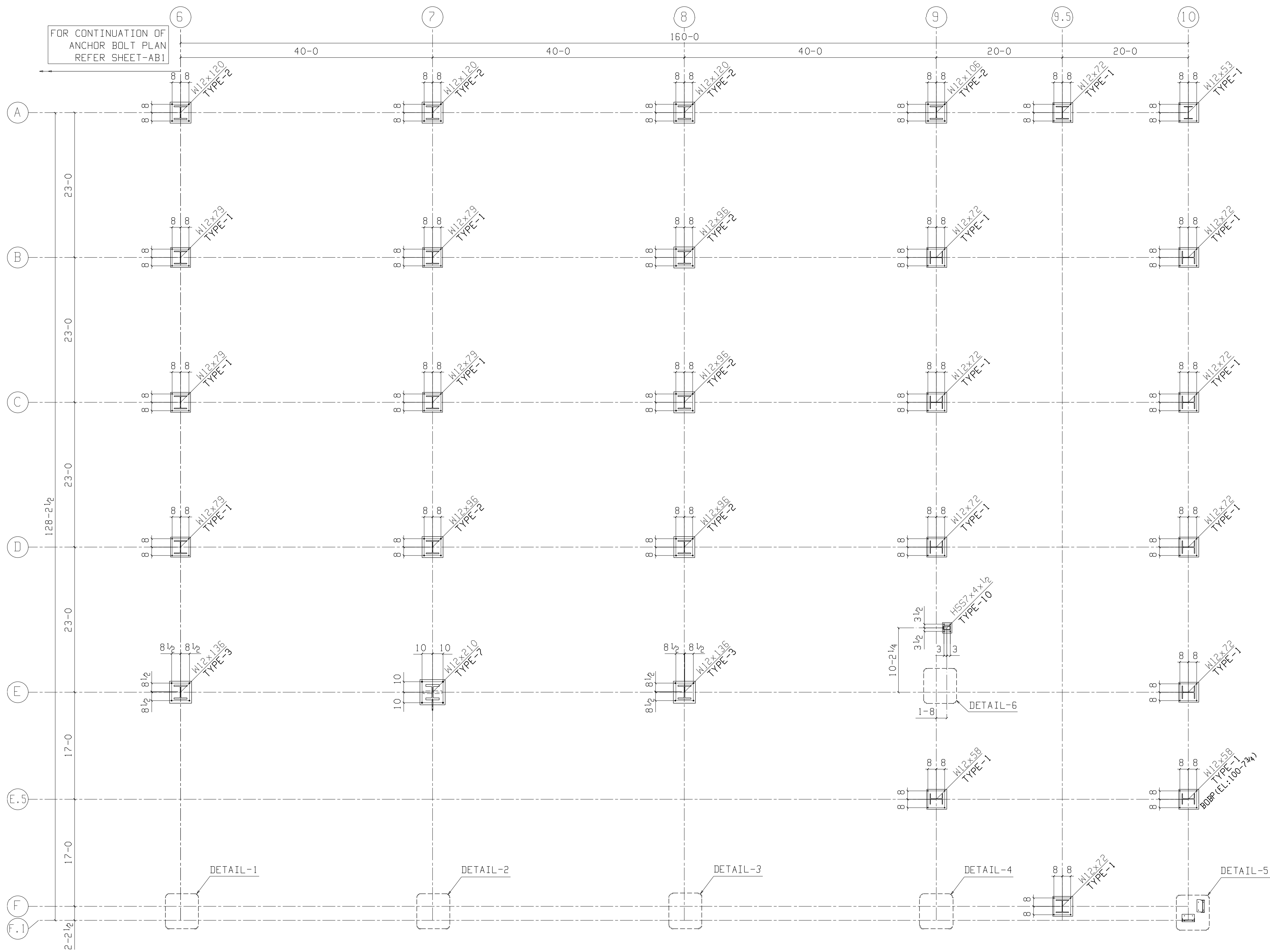
ANCHOR BOLT DETAIL - TYPE 9
(1 LOCATION)



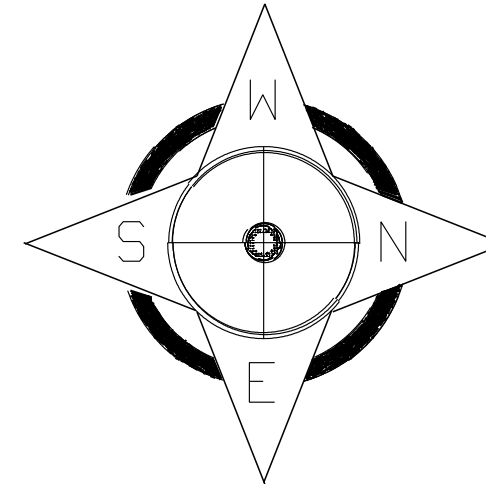
ANCHOR BOLT DETAIL - TYPE 10
(7 LOCATIONS)

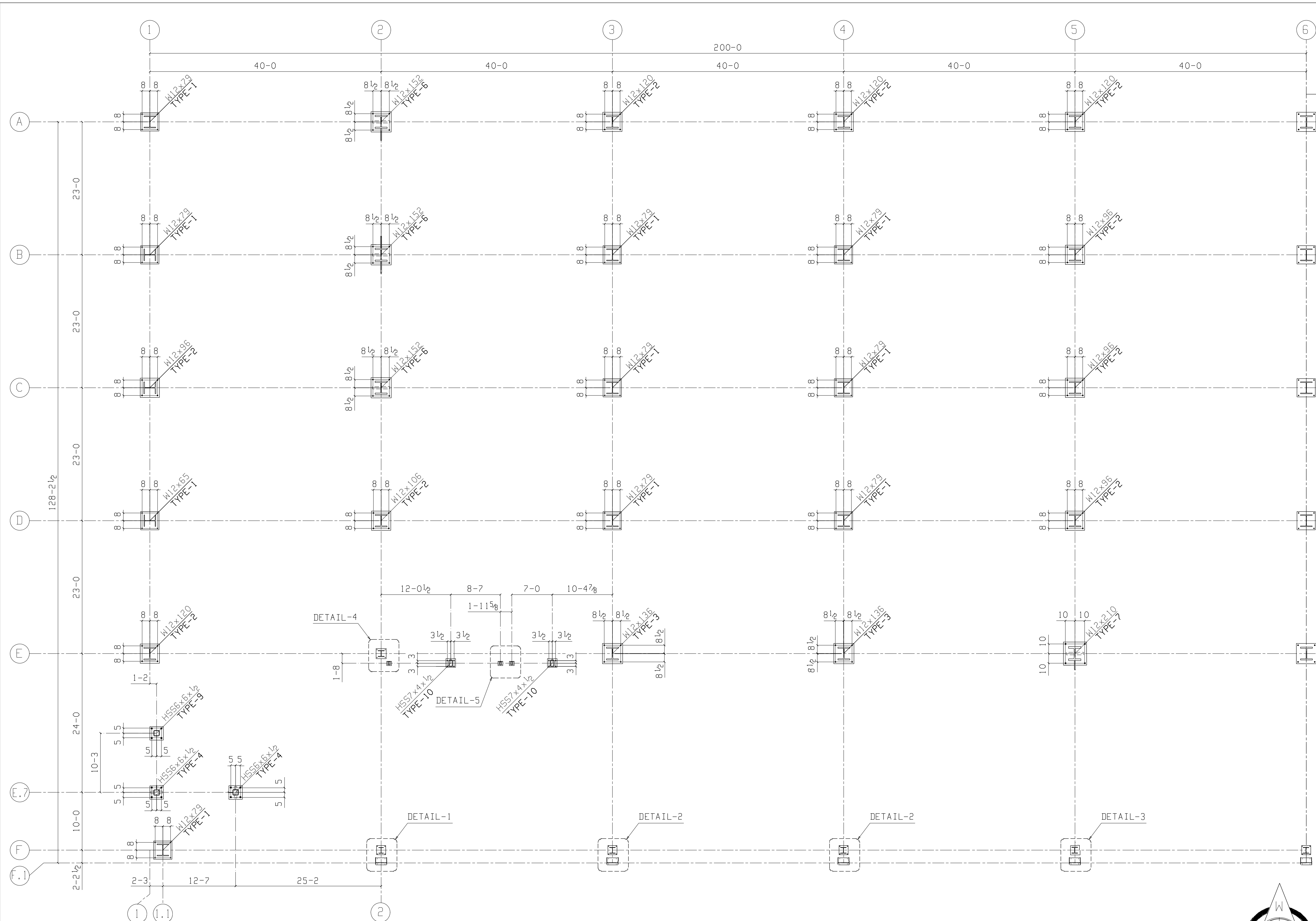
REFER PLAN FOR COLUMN ORIENTATION



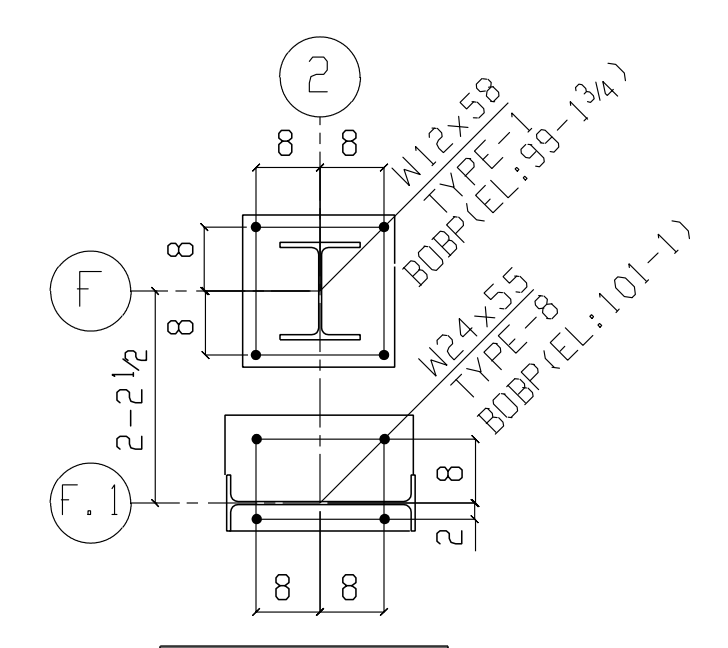


PARTIAL ANCHOR BOLT SETTING PLAN-NORTH HALF
 BOTTOM OF BASE PLATE (BOBP) EL.:99-1 3/4 (U.N.O)
 NOTE:- FOR TYPE 1 THRU 10 REFER SHEET AB3 & AB4

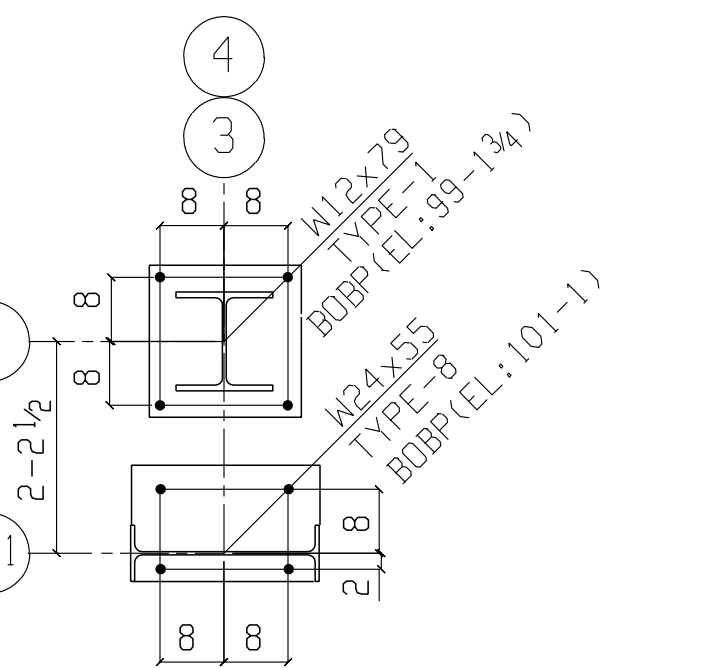




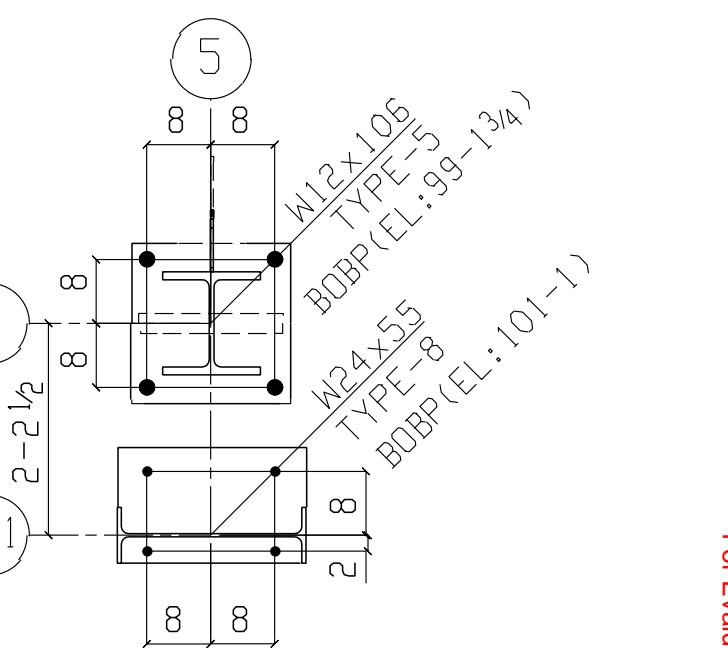
FOR CONTINUATION OF ANCHOR BOLT PLAN REFER SHEET-AB2



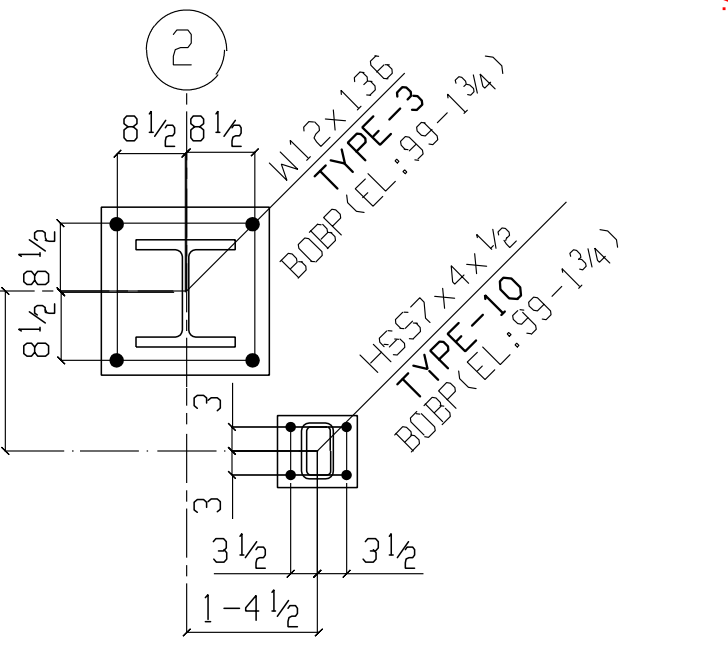
DETAIL-1



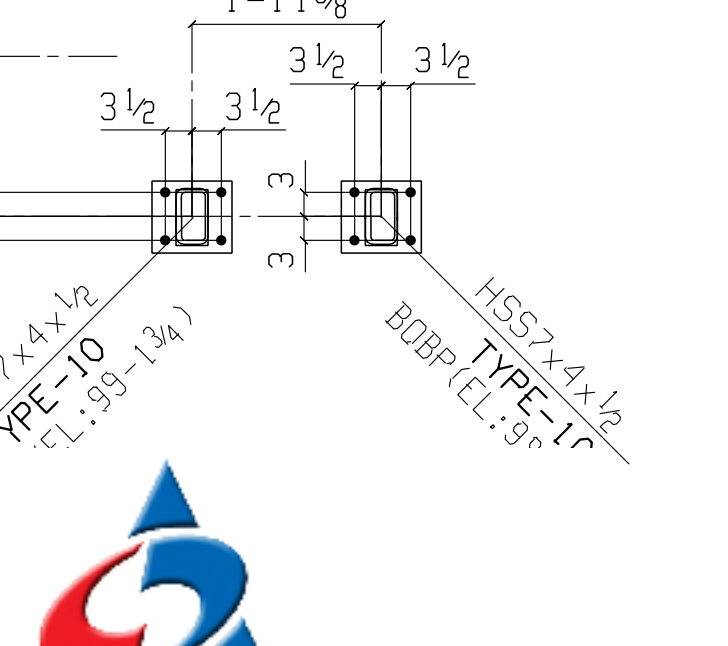
DETAIL-2



DETAIL-3



DETAIL-4



DETAIL-5

PARTIAL ANCHOR BOLT SETTING PLAN-SOUTH HALF
 BOTTOM OF BASE PLATE (BOBP) EL:99-13/4 (U.N.O)
 NOTE:- FOR TYPE 1 THRU 10 REFER SHEET AB3 & AB4

